

PROPOSED BOUNDARY MAP COMMUNITY FACILITIES DISTRICT NO. 2003-3 IMPROVEMENT AREA No. 11 CITY OF CHINO COUNTY OF SAN BERNARDINO, STATE OF CALIFORNIA

I HEREBY CERTIFY THAT THE WITHIN MAP SHOWING THE PROPOSED BOUNDARY OF COMMUNITY FACILITIES DISTRICT NO. 2003-3, IMPROVEMENT AREA No. 11 OF THE CITY OF CHINO, COUNTY OF SAN BERNARDINO, STATE OF CALIFORNIA, WAS APPROVED BY THE CITY COUNCIL OF THE CITY OF CHINO AT A REGULAR MEETING THEREOF, HELD ON THE ____ DAY OF _____, 20____, BY IT'S RESOLUTION NO. _____.

CITY CLERK, CITY OF CHINO

FILED IN THE OFFICE OF THE CITY CLERK OF THE CITY OF CHINO THIS ____ DAY OF _____, 20____.

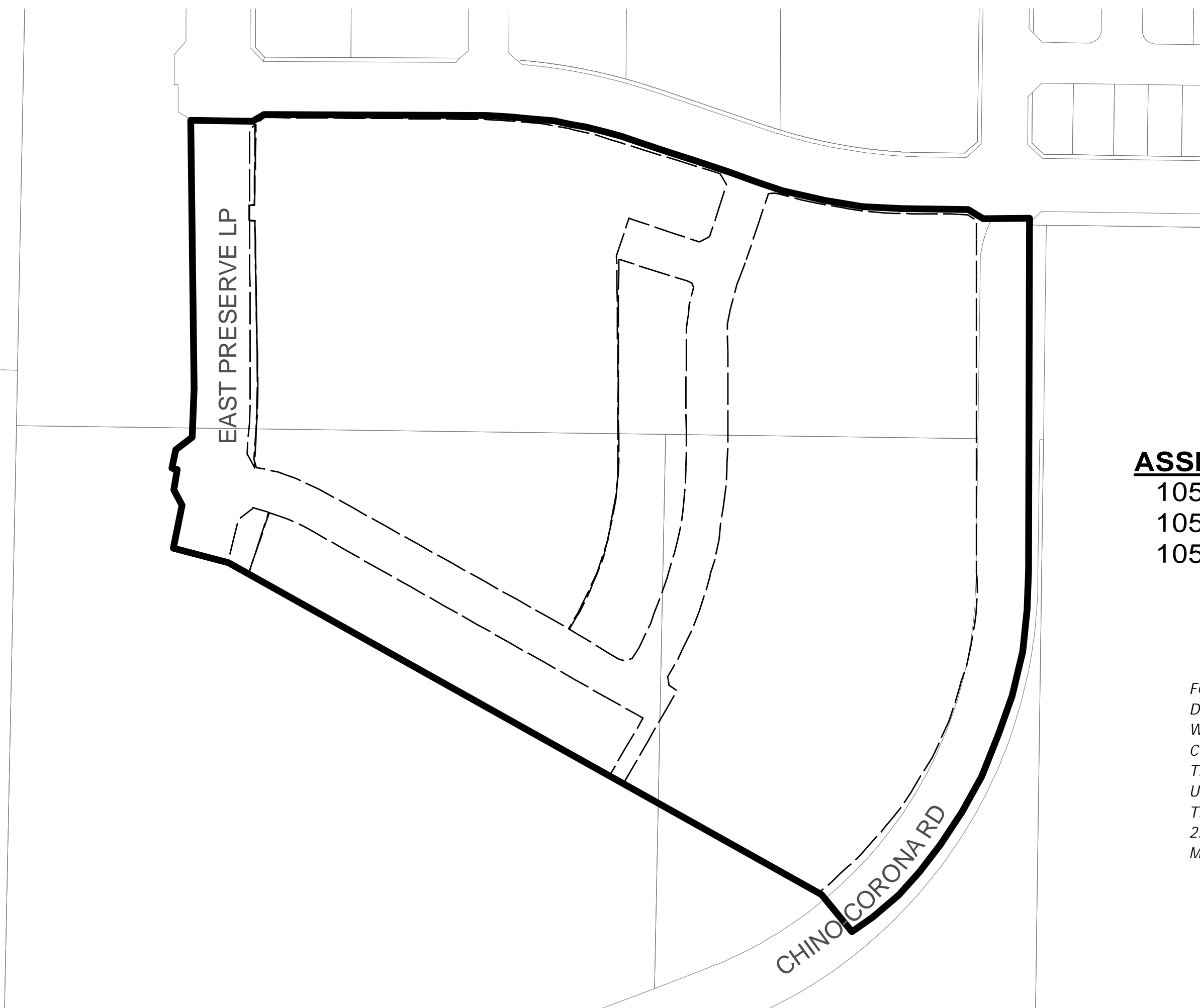
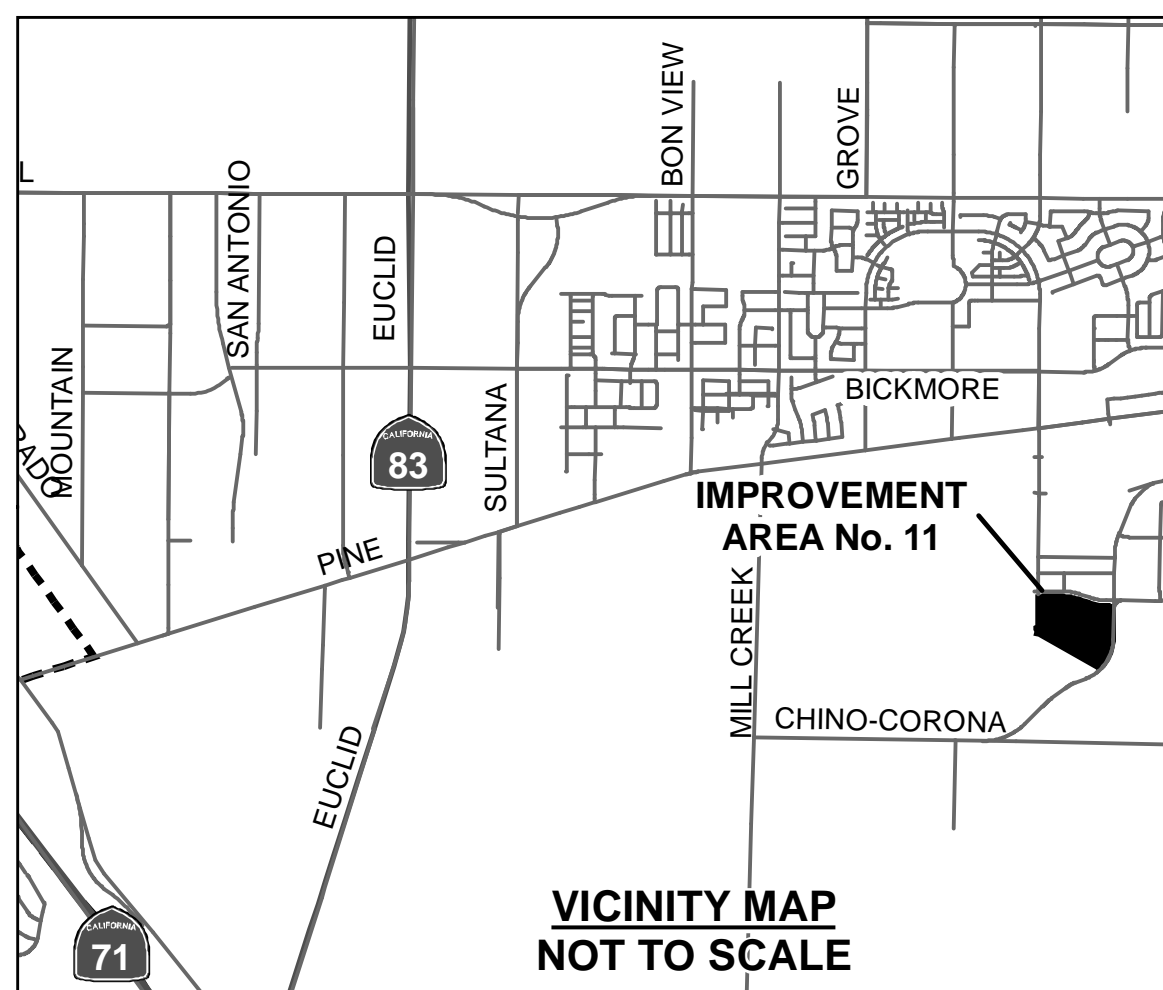
BY: _____
CITY CLERK, CITY OF CHINO

SAN BERNARDINO COUNTY RECORDER'S CERTIFICATE

THIS MAP HAS BEEN FILED UNDER DOCUMENT NUMBER _____ THIS ____ DAY OF _____, 20____, AT ____ M., IN BOOK ____ OF _____ AT PAGE _____, AT THE REQUEST OF CITY OF CHINO IN THE AMOUNT OF \$ _____.

CHRIS WILHITE
ASSESSOR-RECORDER-COUNTY CLERK
SAN BERNARDINO COUNTY

BY: _____
DEPUTY RECORDER



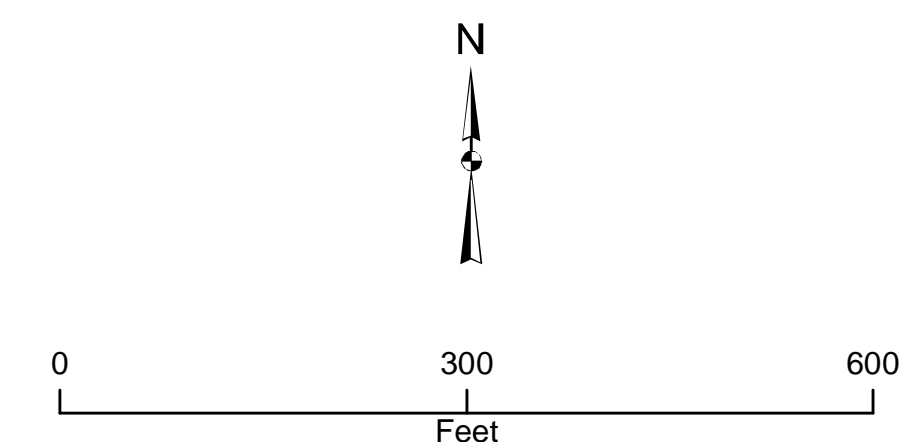
ASSESSOR PARCEL NUMBERS

- 1057-181-29-0000 (PORTION)
- 1057-181-30-0000 (PORTION)
- 1057-181-36-0000 (PORTION)

FOR DETAILS CONCERNING THE LINES AND DIMENSIONS OF THE TRACT/LOT(S) INCLUDED WITHIN THE BOUNDARIES OF THE PROPOSED COMMUNITY FACILITIES DISTRICT, REFER TO THE COUNTY RECORDER'S TRACT MAP FILED UNDER DOCUMENT NUMBER 2024-0035635, THE 15TH DAY OF FEBRUARY 2024 AT 2:49 P.M. IN BOOK NUMBER 367 OF TRACT MAPS AT PAGE 41-45.

LEGEND

- PROPOSED IMPROVEMENT AREA BOUNDARY
- LOT BOUNDARY
- PARCEL BOUNDARY
- XXXX-XXX-XX-XXXX ASSESSOR'S PARCEL NUMBER (APN)



THIS MAP CORRECTLY SHOWS THE LOT OR PARCEL OF LAND INCLUDED WITHIN THE BOUNDARIES OF THE COMMUNITY FACILITIES DISTRICT. FOR DETAILS CONCERNING THE LINES AND DIMENSIONS OF LOTS OR PARCELS REFER TO THE SAN BERNARDINO COUNTY ASSESSOR'S MAPS FOR FISCAL YEAR 2023-2024.