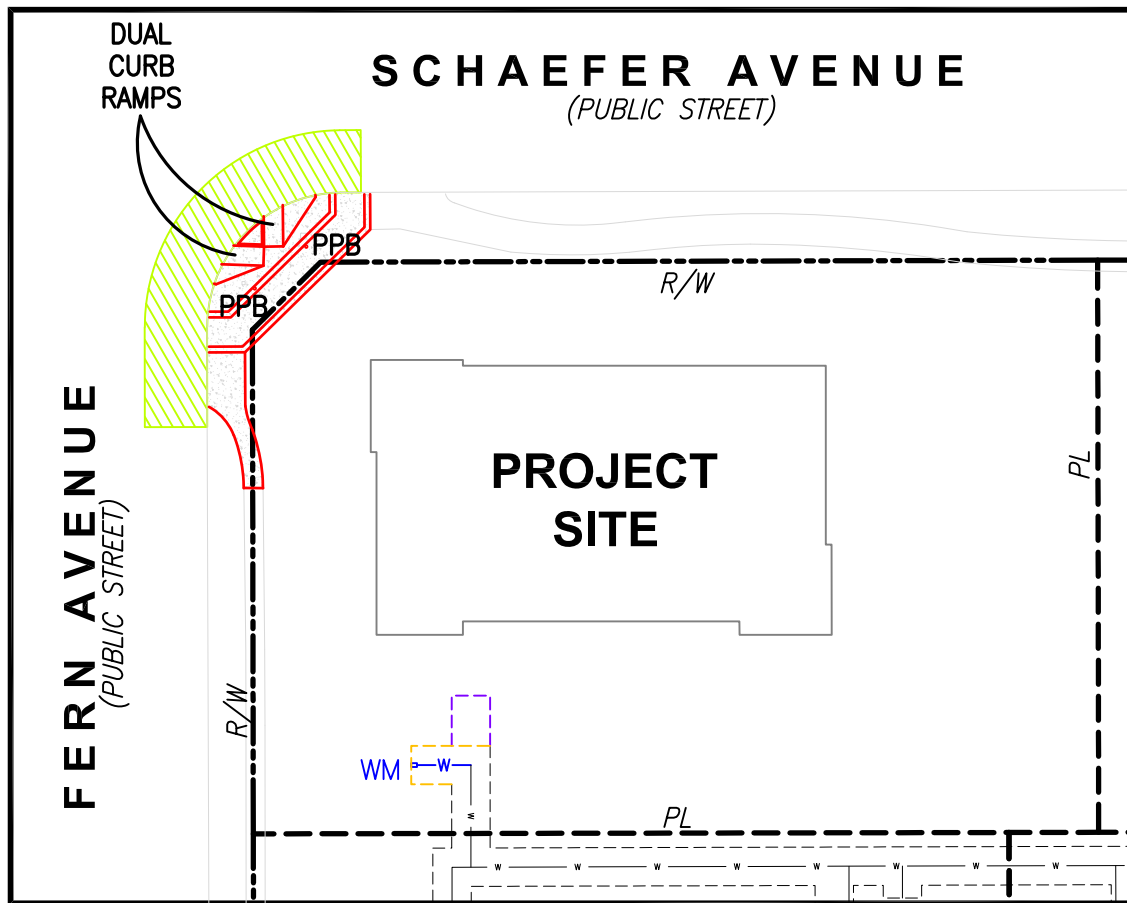


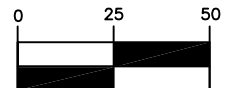
EXHIBIT "C"

PL19-0101 (AA) - PUBLIC IMPROVEMENTS



IMPROVEMENTS MAP

SCALE: 1"=50'



ABBREVIATIONS

PL	PROPERTY LINE
PPB	PEDESTRIAN PUSH BUTTON
R/W	RIGHT-OF-WAY
W	WATER
WM	WATER METER

LEGEND

-----	RIGHT-OF-WAY PROJECT SITE
-----	LOT LINES
-----	WATER EASEMENT (EXISTING)
-----	WATER EASEMENT (QUITCLAIMED)
-----	WATER EASEMENT (PROPOSED)
— w —	WATER LINE (EXISTING)
— w —	WATER LINE (PROPOSED)
---	EXISTING IMPROVEMENTS
---	PROPOSED IMPROVEMENTS
	ROADWAY PAVING WORK AREA
	SIDEWALK PAVING WORK AREA

SCOPE OF WORK:

- ROADWAY AND SIDEWALK PAVEMENT REPLACED;
- CURB RAMP REMOVED AND REPLACED WITH DUAL CURB RAMPS, TO ALIGN WITH DIRECTION OF CROSSING;
- TRAFFIC SIGNAL PUSH BUTTONS RELOCATED, AND PLACED ON NEW POLES, TO ALIGN WITH NEW RAMPS.
- NEW EASEMENTED WATER SERVICE WITH METER.



NA CIVIL, INC.
CIVIL ENGINEERING • SURVEYING
22672 LAMBERT STREET, SUITE 606
LAKE FOREST, CA 92630
949.753.0600